

CWRP WEEKLY CONSTRUCTION PROGRESS REPORT

Week ending August 17, 2013

CANYON SEGMENT



Fine grading of the access road near the middle access

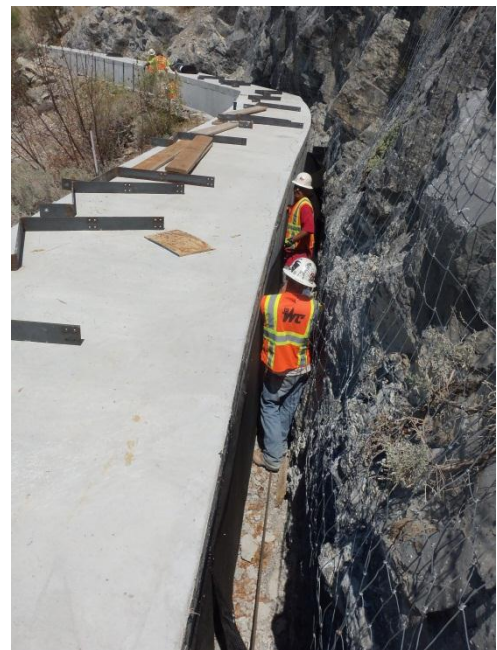
backfill any further. Workers then spent time hanging drain board on the uphill side of the box, and preparing the box for the curb installation. Once complete, the crew mobilized back to the middle access and began fine tuning the grade on the access road.

Toward the end of the week, Spindler Construction came on site and began setting up forms and reinforcement steel for the installation of the retaining curb.

Next week, Spindler will pour the remaining section of retaining curb on the box. Whitaker will have one crew on this segment next week that will focus on the construction of the west gabion basket wall.

This week in the Canyon Segment, two crews were on site performing tasks related to the backfilling of the box culvert. The first crew was able to complete the work on the eastern gabion baskets near windy point. Once completed, the crew spent the remainder of the week fine tuning the grade of the access road from windy point east to the river diversion.

The second crew continued backfilling the box culvert heading west down the alignment. By mid-week, the crew had reached the point where more retaining curb was needed and therefore could not



Placement of drain board on the uphill side of the box culvert in a narrow area

VALLEY SEGMENT

This week on the Valley Segment crews continued to place cobble and decorative rock in the landscaped storm water channel. Crews worked on both the north and south side of Cedar Heights Dr. Work south of Cedar Heights Dr. progressed as crews were able to finish the placement of cobble and decorative rock. The landscaped storm water channel is now ready for water in this section. Once the rock was placed, work on the road base placement for the access road commenced. Crews also began preparation work on the vent pipe pads to be installed at each service vent.



Completed channel near the access road turnaround

Work on the North side of the road also progressed as crews were able to complete the placement of cobble rock this week. Once the cobble was placed, crews began again to place the larger decorative rock along the channel under the direction of the landscape architect.

Next week work will continue on both sides of Cedar Heights Dr. Crews hope to be able to finish rock placement on the north side of Cedar Heights Dr.



Placement of concrete in the drive way near 600 E and 400 N

LOGAN NORTHERN SEGMENT

Work on the Logan northern segment continued this week with the replacement of a driveway near 600 E and 400 N. This driveway was used during construction last fall and winter and was in very poor condition. Crews were able to remove the concrete from the old drive way, excavate the existing subgrade, and place and compact new road base. Once the subgrade was prepared, concrete was delivered to the site and placed by the contractor's concrete crew. Due to the size of the drive way, crews spent two days working on the

driveway pouring half each day. A rip-rap/cement wall was also placed on the banks of the existing canal at this location in order to protect the banks from erosion and provide a suitable drainage path for the runoff water.

Crews still have various small items to complete on this segment of the project including valve collars, access way gates, and other clean up items. These items will be addressed in the coming weeks as crews become available.

1500 NORTH SEGMENT

No work occurred on this segment this week as all available crews were working on other segments of the project. There are only a few items clean up items that remain on this segment which will be addressed in the coming weeks as crews become available.

LAUB SEGMENT

No work occurred on this segment this week as all available crews were working on other segments of the project. In the coming weeks, crews will install a drain line to collect storm water and seepage water from springs along the hillside. They will also perform final grading and vegetation of the area.