



CWRP WEEKLY CONSTRUCTION PROGRESS REPORT

Week ending April 27, 2013

RIVER DIVERSION SEGMENT

This week on the River Diversion, the screen cleaner arrived and was assembled above the intake screens. A representative from Atlas Polar, the manufacturer, was onsite to oversee and assist in the installation process. Installation went very smoothly and the cleaner was ready for operation a few days earlier than planned. Some fine tuning of the different functions began toward the end of the week and will continue through next week.

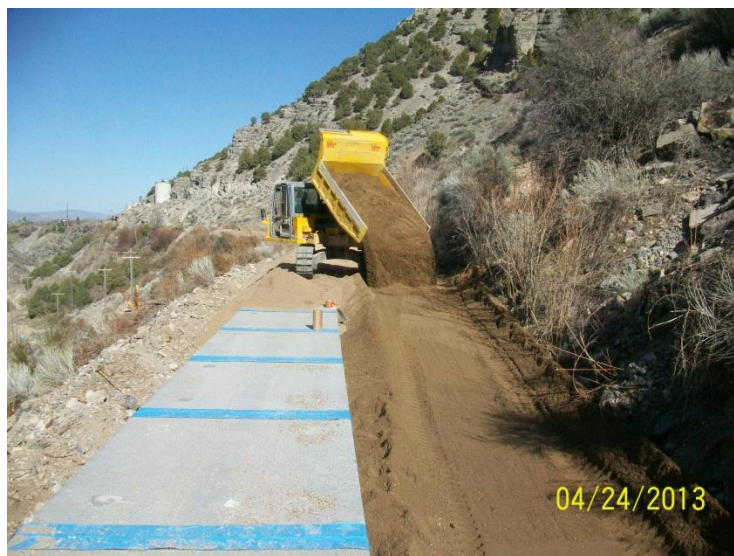
Next week Whitaker will put the finishing touches on the diversion structure and then remove the coffer dam. Once the coffer dam is removed the screen cleaner representative will continue testing the cleaner and toward the end of the week, water will be diverted down the culvert.



Installed Screen Cleaner

CANYON SEGMENT

This week in the canyon, Whitaker continued backfilling the pre-cast culvert near the middle access road. Material from a Cache County gravel pit was used as fill material and placed with a small loader, small excavator, and track mounted rotating dump truck. Work was meticulous as the width of the channel doesn't allow larger machines to work.



Backfilling pre-cast box culvert

Whitaker and Spindler had crews inside the box culvert addressing punch list items and readying the culvert for final inspection. Toward the end of the week, an inspection team from J-U-B Engineers and a representative from Whitaker Construction walked the inside of the culvert to verify that all of the items off of the punch list generated last week had been addressed. A portion of the cast-in-place box culvert that was not initially inspected last week was inspected and a punch list was generated for this section. All items off of the punch list were found to be completed inside the pre-cast box. A

few items remain to be addressed inside the cast-in-place.

Next week Spindler and Whitaker will have crews working inside the box working on the pre-water walk through items identified, a final walk through will also occur to verify that all issues have been addressed. Back filling will also continue in the canyon segment.

VALLEY SEGMENT

This week on the Valley Segment, Whitaker have been cleaning and preparing the pipeline for water. Water delivery was provided to the Logan Golf and Country Club through a culinary water connection with Logan City.

Kevin Majors Construction was also on the site this week, continuing to test the joints along the 66 inch RCP line.

Next week Whitaker will continue to work on the Logan Golf and Country Club turnout. Kevin Majors will finish the pipe testing and Whitaker will go back through the pipe one more time to address the punch list items that were noted the previous week. Once all of the joints pass testing and the punch list items have been addressed, the pipe will be ready for water.



Pouring the sloped floor in the north bay of the pressure reducing structure



Delivering culinary water to Logan Golf and Country Club

1500 NORTH SEGMENT

Crews this week began the process of filling the main line and preparing it for a pressure test. The Logan Northern main line, now connected to the 1500 N line, was also filled and prepared for the pressure test.

While the line filled, crews continued grading out the area near the pressure reducing structure and along the USU agricultural field. The surfacing of ground water has slowed but a lot of the surrounding material is very soft and saturated.

Toward the end of the week it was discovered that one of the coupling sleeves near the pressure reducing structure was leaking. The coupler was excavated and replaced and the line was again and filled for the pressure test.

A few of the sub-contractors were also on site this week including Spindler Construction and Freedom Electric. Spindler was able to complete the installation of the sloped floor in the north bay of the pressure reducing structure along with the valve pedestal under the plunger valve. This completes Spindler's work on this segment. Freedom Electric pulled electrical wires through the conduit and began preparing the plunger valve for operation.



Placing a lid on the 96 inch man hole

Next week Whitaker will pressure test the mainline of the 1500 N and Logan and Northern Segments. Freedom Electric will also be on site preparing the plunger valve for operation.



Gravity turnout energy dissipation box

boxes including butterfly valves and orifice plates. As there was water in the mainline for the pressure test, a few of these gravity turnouts were turned on to test them out and view how they will operate.

Next week the crews will complete the modifications to the three remaining turnouts and prepare the line for operation. A pressure test on the main line will also occur next week.

LOGAN NORTHERN SEGMENT

This week on the Logan Northern all the turnouts were completed minus three turnouts that require slight modifications prescribed by the management team. Crews spent most of their time in the vicinity of the 400 N and 600 E crossings. Coordination between water users and the water master has been on going as users are anxious to see how the new system will operate and when they will be able to use the water.

A second crew went through the segment this week and installed all of the plumbing in the gravity turnout



Turnout slightly north of the 400 N crossing

LAUB SEGMENT

This week on the Laub segment, crews attempted to fix the leak discovered in the meter box during last week's walk through. While attempting to fix the line the tee off of the mainline into the turnout cracked and a bigger leak developed. This leak was large enough that the main line had to be shut down until a new service saddle could be installed. At the end of the week the new service saddle was installed and the main line was again filled with water. Service interruption was roughly 48 hours.

Another issue discovered on this segment was related to the two turnouts that are plumbed into the existing canal head gate and the new system. In order for these turnouts to function properly two additional check valve need to be installed. This was discussed among the project team and the additional valves will be ordered and installed.

Next week crews hope to be able to install the additional check valves. Grading of the access road and final clean-up will also continue in the coming weeks.