

**CWRP WEEKLY CONSTRUCTION PROGRESS REPORT**

Week ending November 2, 2013

**RIVER DIVERSION SEGMENT**



**Installing rebar for sill wall adjustment**

This week on the River Diversion Segment, Spindler Construction was back on site to perform the work associated with raising the existing sill wall height. This addition of concrete was deemed necessary based off of the information collected during the system flow test. Crews drilled anchoring rebar into the existing sill wall and set forms around the sill. Crews then covered the forms and got things ready for concrete next week.

Whitaker Construction was also on site with the water master from the canal company to winterize the structure. Crews pulled out the fish bypass and placed the stop logs. Whitaker also went over the procedures of

winterization with the water master. These procedures will be included in the final operation and maintenance manual.

Next week, crews will complete the work on the sill with placement of concrete.

**CANYON SEGMENT**

This week on the Canyon Segment, Whitaker installed an air vent near the top of the alignment near the USGS metering station. This vent is designed to let air escape out of the box culvert in a high flow situation. Crews core drilled a hole on top of the box culvert, installed the air vent pipe, and then grouted around the pipe to seal the gap.

**VALLEY SEGMENT**

This week on the Valley Segment, Whitaker Construction planted seven trees inside the Logan Golf and Country Club. These trees were planted in order to restore the trees taken out during the pipe installation last winter. A hydro-seeding crew was also on site this week and hydro-seeded all of the bare areas along the alignment. This was



**Air vent pipe installed on top of box culvert**

in an effort to stabilize the ground and reestablish vegetation removed during construction. Crews also completed the work on items noted on the post-irrigation season walk through inside the 66 inch RCP.

Next week crews will install traffic bollards in the access road near the access points. This will discourage unauthorized vehicular traffic but still allow pedestrian access.

### 1500 NORTH SEGMENT

Hydro seeding also occurred on this segment this week. Crews placed seed on the south side of 1500 N near 1200 E. Vegetation in this area will reduce erosion of the shoulder of the road and restore the site to its pre-construction state.

### LOGAN NORTHERN SEGMENT

Winterizing procedures also took place on this segment this week as the water master went to each blow off apparatus and drained the main pressure water line. The water master also closed the necessary valves and prepared everything for winter. The hydro-seeding crew went along the alignment and seeded all of the non-vegetated areas similar to the work performed on 1500 N and Valley Segments.

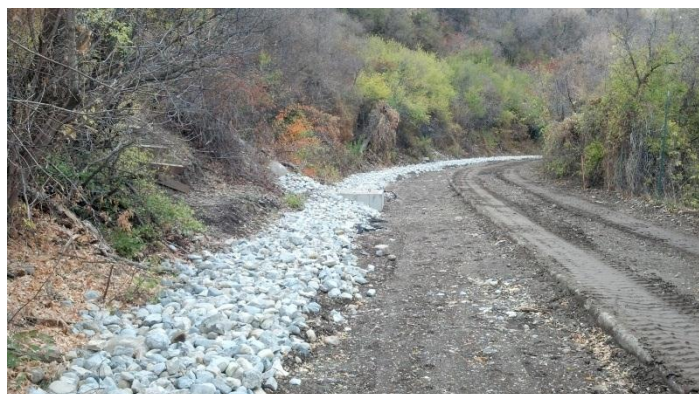
Next week, crews will also remobilize to 800 N and 600 E to install an additional 2 inch service that was added to the project.



**Hydro-seeding a bare portion of canal bank**

### LAUB SEGMENT

Work on the Laub Segment progressed this week as cobble rock covering the geotextile above the pipe was placed and leveled throughout the whole project as well. All of the concrete boxes and cleanouts have been installed and grouted, but crews are waiting for the gates to arrive to install in the turnout boxes. Crews hauled in native material and shot grades to bring the native soil on the south side of the old canal up to grade.



**Installed cobble rock on top of the drain line pipe section**

They had a mini-grader putting an initial slope on the road of 2%. Soft spots found in the soil where road base will be placed have been cleaned up and re-compacted with different soil. With increased loader and grader traffic, an emphasis on visibility and traveling at safe speeds was discussed for safety this week.

Next week, crews will continue work on the native soil and begin hauling in road base to install as part of the canal typical section.